



**PERFORMANCE MACHINE LIMITED WARRANTY INFORMATION**

Performance Machine warrants to the original purchaser that the parts to be free of manufacturing defects in materials and workmanship for a period of (1) year from the date of purchase. In the event warranty service is required, you must call Performance Machine immediately with a description of the problem.

If it is deemed necessary for Performance Machine to make an evaluation to determine whether the part is defective, a return authorization number will be given by Performance Machine. The parts must be packaged properly so as to not cause further damage and returned prepaid to Performance Machine with a copy of the original invoice of purchase and a detailed letter outlining the nature of the problem. If after the evaluation by Performance Machine the part was found defective it will be repaired or replaced at no cost to you. If we replace it, we may replace it with a reconditioned one of the same design.

Performance Machine shall not be held liable for any consequential damage resulting from the failure of a Performance Machine part. Performance Machine shall have no obligation if a part becomes defective as a result of improper installation or abuse.

**IMPORTANT NOTICE**

Before installing, read through these instructions completely; this will familiarize you with the way in which parts fit together and the tools needed to complete the job. This product involves alterations to your vehicle and may void your factory warranty. PM STRONGLY recommends this installation be done by an experienced mechanic.

**DISCLAIMER**

These Performance Machine parts are designed for high performance off road applications and are intended for the very experienced driver only. The installation of these Performance Machine parts may adversely effect or void your factory warranty.

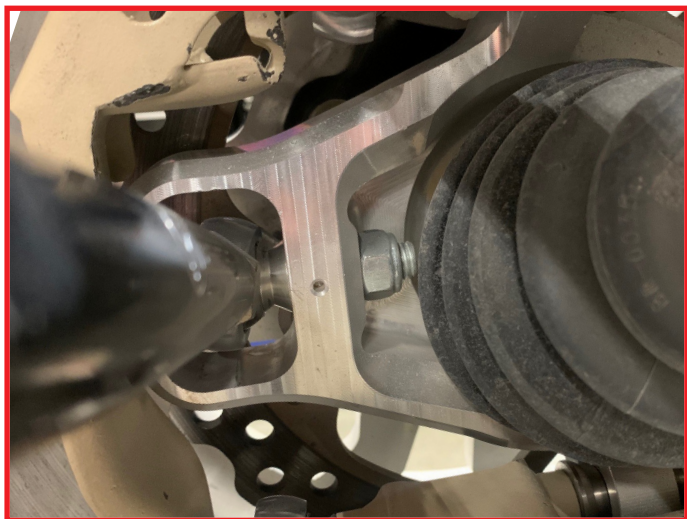
**INSTRUCTIONS**

1. Place vehicle in park on a level surface or on a vehicle lift. Vehicle must be supported by the frame not by the a-arms or trailing arm.
2. Remove wheels from vehicle.
3. Remove the Brake Caliper from the OEM Bearing Carrier and place out of the way.
4. Remove the large axle nut using 30mm socket after removing the cotter pin. You can now remove the OEM hub and disc assembly from the vehicle.
5. **Front Specific Instructions:**
  - a. Remove tie rod end bolt and nut, ensure to remove the cotter pin before removing the nut. Keep hardware, it will be reused.
  - b. Remove pinch bolt on lower ball joint and lower the a-arm out of the way.
  - c. Remove the cotter pin and nut holding the upper ball joint to the OEM bearing carrier.
  - d. Remove the upper ball joint from the OEM Bearing Carrier. You will need a pickle fork and/or hammer to break the ball joint loose. Be careful not to damage the rubber seal. If ball joint boot is torn or ball joint has play replace with a new component before installing bearing carrier.
  - e. The PM Bearing Carrier can now be installed.
  - f. Mount the new bearing carrier in the same manner as the old one.
  - g. Torque the upper ball joint nut to 48 ft-lbs and install new cotter pin.
  - h. Torque the lower ball joint pinch bolt to 35 ft-lbs.
  - i. Torque the tie rod end bolt to 77 ft-lbs and install new cotter pin.



**6. Rear Specific Instructions:**

- a. Remove the center radius rod bolt from the OEM bearing carrier. You will need a wrench on the inside of the bearing carrier and socket on the outside to remove.
- b. Remove the 2 bolts attaching the bearing carrier to the trailing arm
- c. Remove the OEM Bearing carrier from the vehicle.
- d. The PM bearing carrier can now be installed.
- e. Mount the bearing carrier on top and bottom to the trailing arm using the OEM bolts. Use supplied stainless steel spacers on each side of the spherical bearings. Torque to 77 ft-lbs.
- f. Using the supplied M12 x 80mm long bolt install the center radius rod end to the bearing carrier. Torque the bolt to 77 ft-lbs, then add the locknut to the inside of the bearing carrier and also tighten to 77 ft-lbs.



**7. Complete the Installation:**

- a. Reinstall the OEM hub and disc assembly to the axle/bearing carrier. Tighten the axle nut to 180 ft-lbs and install a new cotter pin.
- b. Install the calipers to the bearing carrier using the OEM hardware. Apply medium strength loctite and torque to 35 ft-lbs.
- c. Reinstall wheels on to the vehicle.
- d. Before testing driving vehicle pump the brake pedal to ensure the brakes are functioning properly.
- e. It is advisable to adjust your alignment after the installation of new components.

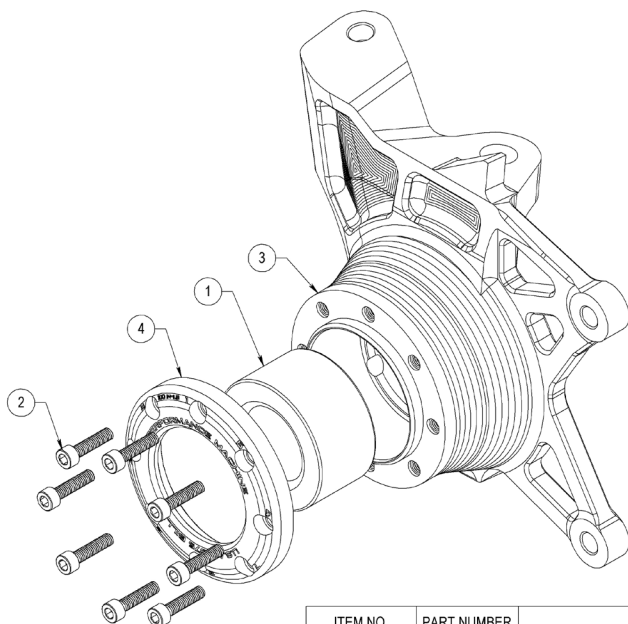
**You are now ready to drive you vehicle**

**8. Wheel Bearing Replacement Instructions.**

- a. To replace a damaged or worn wheel bearing follow the steps below.
- b. Remove bearing carrier per instructions above.
- c. Remove the bearing holding plate bolts using 5mm allen wrench.
- d. Use a hydraulic press or punch and hammer to remove the old bearing.
- e. Install new bearing into the bearing carrier using a hydraulic press. Ensure that the bearing is pressed straight into the carrier and ensure to press evenly on the inner and outer race. Never press on the inner race only during installation.
- f. Check from the inside of the carrier to ensure the race is fully seated into the carrier. The top face of the bearing will be slightly above the top face of the bearing carrier.
- g. Install the bearing holding plate back onto the bearing carrier.
- h. Use medium strength loctite and torque bolts to 100 in-lbs in the pattern engraved on the part.
- i. Reinstall on to vehicle per instructions above.

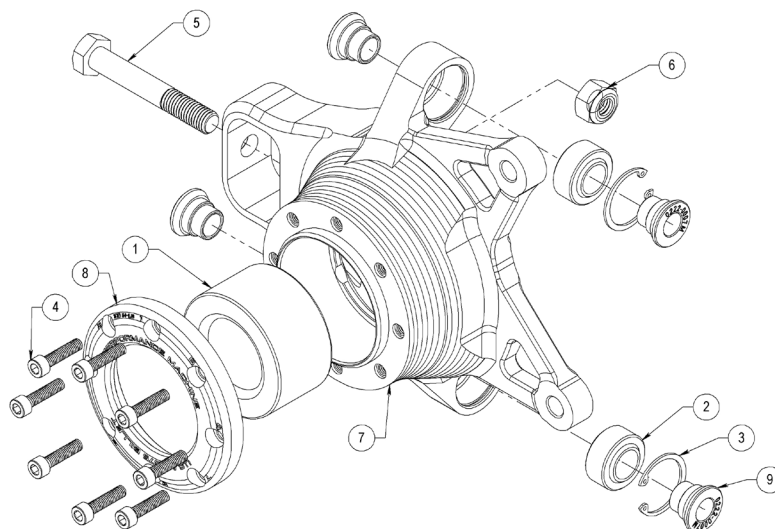


## Front Bearing Carrier



ITEM NO.	PART NUMBER	DESCRIPTION	QTY.
1	0071-0037	BALL BRG 39mm ID X 68mm OD X 37mm SEALED	1
2	0101-8002-ZN	SHCS M6 X 1.0 X 25mm, ZINC PLATED	8
3	0221-0001 (0221-0002)	UTV BEARING CARRIER, FRONT LEFT (RIGHT), CANAM X3	1
4	0221-0005	BEARING LOCK RING, UTV BEARING CARRIERS, CANAM X3	1

## Rear Bearing Carrier



ITEM NO.	PART NUMBER	DESCRIPTION	QTY.
1	0071-0037	BALL BRG 39mm ID X 68mm OD X 37mm SEALED	1
2	0071-6315	SPHERICAL BEARING 1-3/16 OD X 5/8 ID X 5/8 WIDE, 52100 STEEL	2
3	0072-0041-ZN	SNAP RING 1-3/16 INTERNAL, ZINC PLATED	2
4	0101-8002-ZN	SHCS M6 X 1.0 X 25mm, ZINC PLATED	8
5	0105-8380-ZN	HHCS M12 X 1.75 X 80mm, ZINC PLATED	1
6	0107-8034-ZN	NUT M12 X 1.75 X 12mm TALL ELASTIC LOCK, ZINC PLATED	1
7	0221-0003 (0221-0004)	UTV BEARING CARRIER, LEFT (RIGHT) REAR, CANAM X3	1
8	0221-0005	BEARING LOCK RING, UTV BEARING CARRIERS, CANAM X3	1
9	0222-0007M	MISALIGN SPACER, SPHERICAL BEARING, UTV, CANAM X3	4